

- Develop and review clinical guidelines in relation to Tissue Viability
- Carry out clinical audit and analyse data
- Facilitate staff professional development
- Facilitate student nurses on community specialist placements
- Support health care professionals with cost effective prescribing and equipment selection
- Devise teaching and manage educational programmes for health care professionals
- Support health care professionals with complex risk assessment
- Manage the provision of Negative Pressure Wound Therapy treatment
- Undertake Serious Incident Investigations in relation to Pressure Ulcers. CNS Chairs and attends the monthly panel meeting
- CNS undertakes external investigations when required by other organisations

The service offers a professional, friendly service which does not operate a waiting list and responds to referrals within 48 working hours and aim to visit within 10 working days. This may vary during the year due to staffing levels.

Tissue Viability Service is available Monday to Friday 8:30am – 5:00pm
(24/7 secure answerphone facility available to leave messages)
Matters of an urgent nature relating to patient care must be referred to the patient's GP

Contact details

Tissue Viability
 First Floor, Beauchamp Centre
 Mount Gould Hospital
 Mount Gould Road
 Plymouth
 PL4 7QD

Tel: 01752 434757

Fax: 01752 314038

Email:
livewell.communitytissueviability@net.net

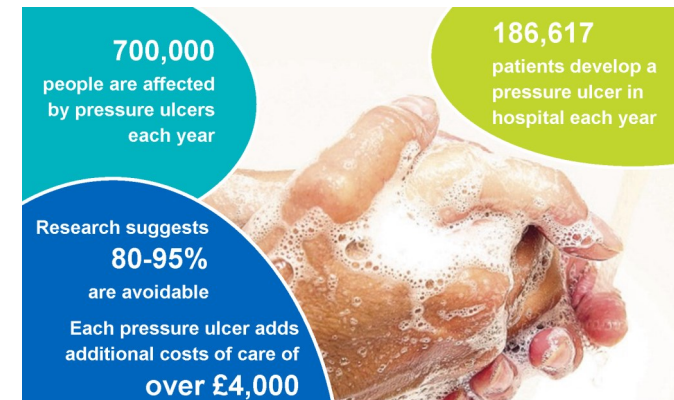


Livewell Southwest



@livewellsw

Tissue Viability Advisory Service



“We don’t only want our patients to get better. We want to get better.”

Service Description

The Tissue Viability Service provides specialist evidence based advice to all Health Care professionals, patients', families and carers. All patients' are eligible for referral to our service, if registered with a GP in the geographical boundaries of Plymouth, South Hams & West Devon (Western CCG locality) and meet the referral criteria.

Tissue Viability visits are conducted in a variety of care settings which include; independent clinics, community hospitals, care homes, GP surgeries and patient's own homes. The service offers timed appointments, where appropriate. Visits are prioritised from the information provided on the referral form. Confidential specialist advice is given according to the organisational confidentiality policy.

We are an advisory service and collate and store data specific to our service on an electronic database. The database enables us, through clinical audit, to measure patient outcomes, evaluate and improve the service we provide. Patient satisfaction audit is carried out through a corporate patient questionnaire as part of the Commissioning for Quality and Innovation Framework.

Aims and Objectives

- To provide patients and carers with information required to make informed decisions about their condition
- To assess plan and provide high quality, individualised specialist care to facilitate independent living
- To enable individuals with disabilities and long term conditions to achieve quality of life and independence
- To treat every individual with dignity and respect
- To provide an advisory service to other Health Care professionals
- To provide a seamless service with other Health Care professionals and statutory/non-statutory agencies
- To prevent unnecessary GP appointments and visits
- To facilitate early discharge from hospital
- To prevent unnecessary hospital admission
- To protect vulnerable adults
- To achieve satisfaction from all those who use the service
- To consistently improve standards of quality care and innovations
- The service aims to standardise practice across all health care settings and to ensure that Livewell Southwest are working in line with government directive and national guidelines

- To improve the standards of the service

Scope of Service

The Tissue Viability Service acts as a specialist resource to Livewell Southwest and gives advice to all Health Care professionals, patients and carers on the management of wounds that are complex in nature and failing to respond to treatment.

Tissue Viability's role consists of:

- To provide specialist advice to patients and Health Care professionals to improve patient outcomes
- Support commissioning, procurement and equipment management contracts
- Develop and implement guidelines to support essence of care
- Facilitate a link nurse system
- Facilitate pressure ulcer champions
- Participate in clinical trials and evaluations
- Liaise between primary and secondary care
- Implement, cascade and disseminate information regarding new initiatives, change in practice
- Develop and update the wound care formulary